

ENTANGLEMENT

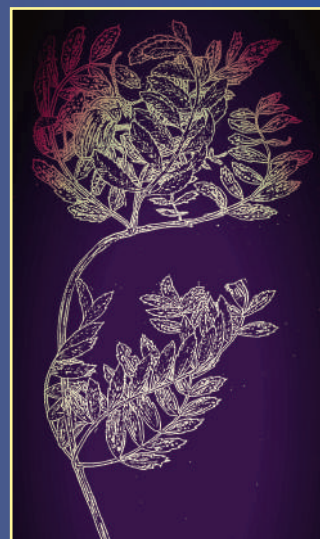
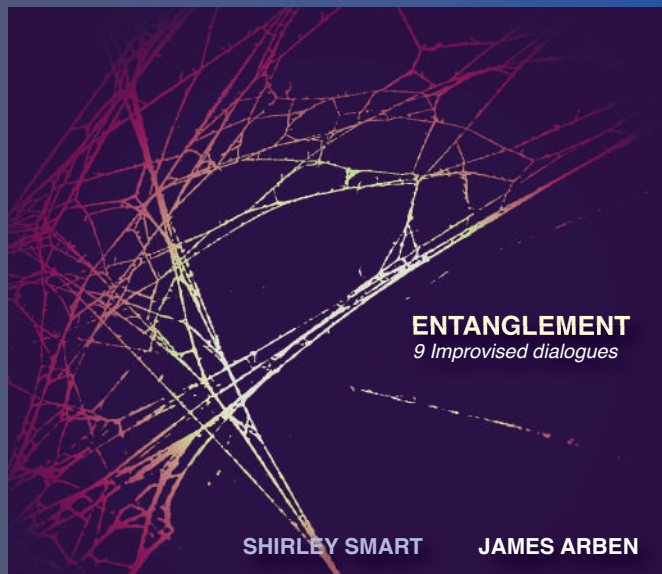
9 Improvised dialogues

SHIRLEY SMART

cello

JAMES ARBEN

*tenor saxophone,
baritone saxophone, bass clarinet,
flute*



James and Shirley met whilst working with Ethiopian vibes master Mulatu Astatke, and quickly discovered a shared interest in the possibilities of free improvisation that drew on their common interests and aesthetic, as well as musical interaction in a free setting.

These dialogues are an exploration of harmonic, rhythmic and timbral tension and resolution, created from bold experimental playing techniques and melodic discourse. The music draws on influences from Jazz to Middle Eastern, Folk and Contemporary music.



FMR CD 585